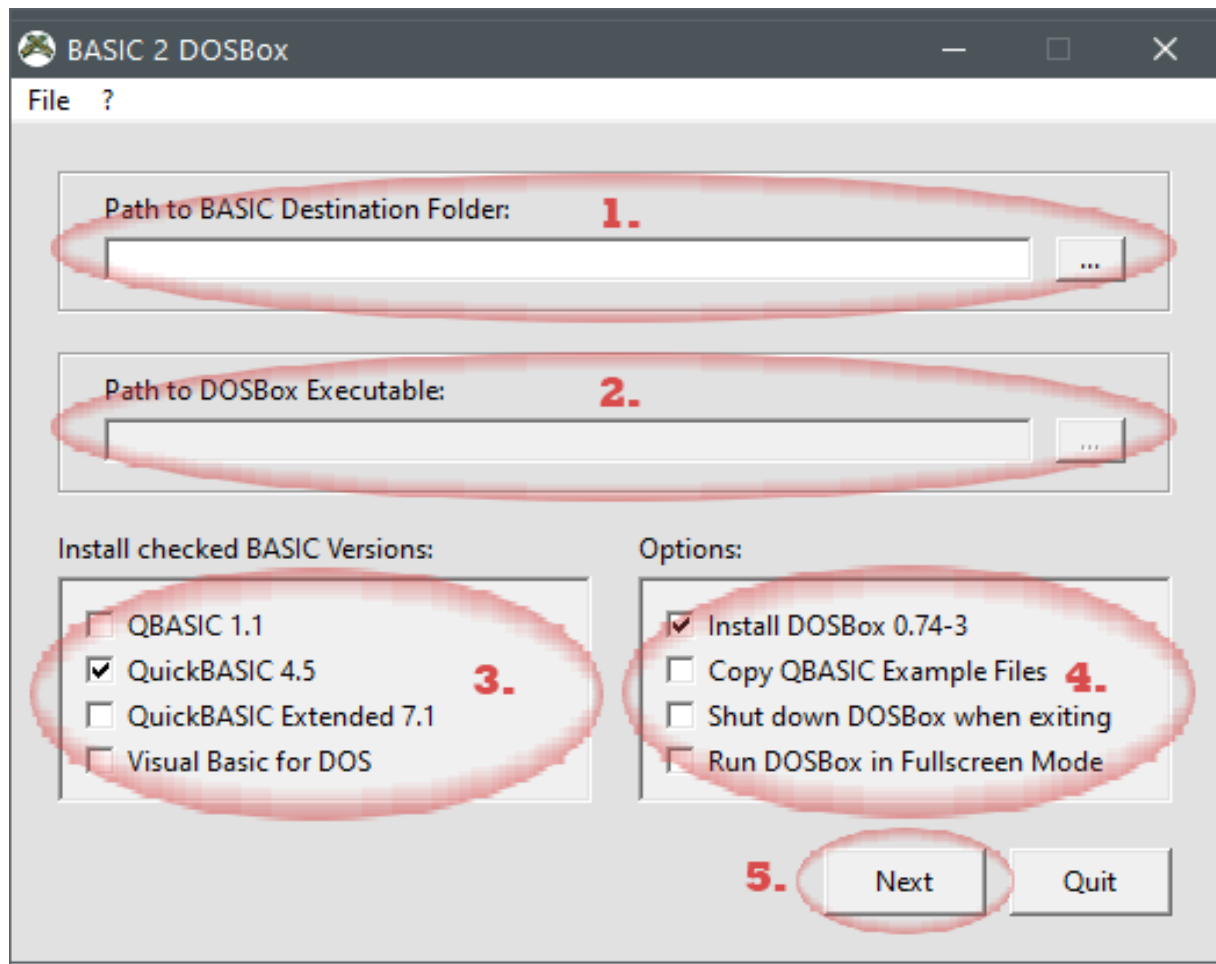


BASIC 2 DOSBox - Quick Guide

This handy tool does all the work for you.

BASIC 2 DOSBox can be launched by double clicking the "*basic2dos.exe*" file.



1. **Path to BASIC Destination Folder:** Full path to a folder of your choice, e.g: *C:\oldDOS*
2. **Path to DOSBox Executable** - only needed, if **Install DOSBox 0.74-3 in Options** is unchecked. In this case, please provide the full path to DOSBox.exe; e.g :
C:\oldDOS\DOSBox\DOSBox.exe
3. **Install checked BASIC Versions:** Select at least one BASIC version.
4. **Options:**
 - **Install DOSBox 0.74-3:** Check this, if you don't have or won't use a manually installed copy of DOSBox
 - **Copy Example Files:** This will copy seven sample programs to *_source\EXAMPLES:*
 1. **GORILLA.BAS**
 2. **MONEY.BAS**
 3. **NIBBLES.BAS**
 4. **QBLOCKS.BAS**
 5. **REMLINE.BAS**
 6. **REVERSI.BAS**
 7. **SORTDEMO.BAS**

- **Shut down DOSBox when exiting:** If selected, **DOSBox** will be terminated after exiting **QuickBASIC** respectively any other application
 - **Full Screen Mode:** If checked, **DOSBox** will be launched in full screen mode
5. Click on "**Next**" button. Once the installation is complete, confirm with "Yes" to quit.

Open the sub-directory "*_shortcut*" in that folder you have selected in step 2.

By double-clicking a shortcut, DOSBox will be launched with the chosen configurations. In order to have access to all your "BASIC" source code, you should move these files to the sub-directory named "*_source*".

This folder will always be mounted as drive D.

Additionally, a directory named *_floppy* will always be mounted as Floppy Drive A.

It's as simple as that! Have fun!

BASIC 2 DOSBox should run on all modern Windows OS's (both x86 and x64), such as: Windows XP, Vista, 7, 8, 8.1 and 10

Tested with these OS's:

Windows XP Professional Service Pack 3 (x86)

Windows 7 Ultimate Service Pack 1 (x86)

Windows 10 Pro Version 2004 (x64)